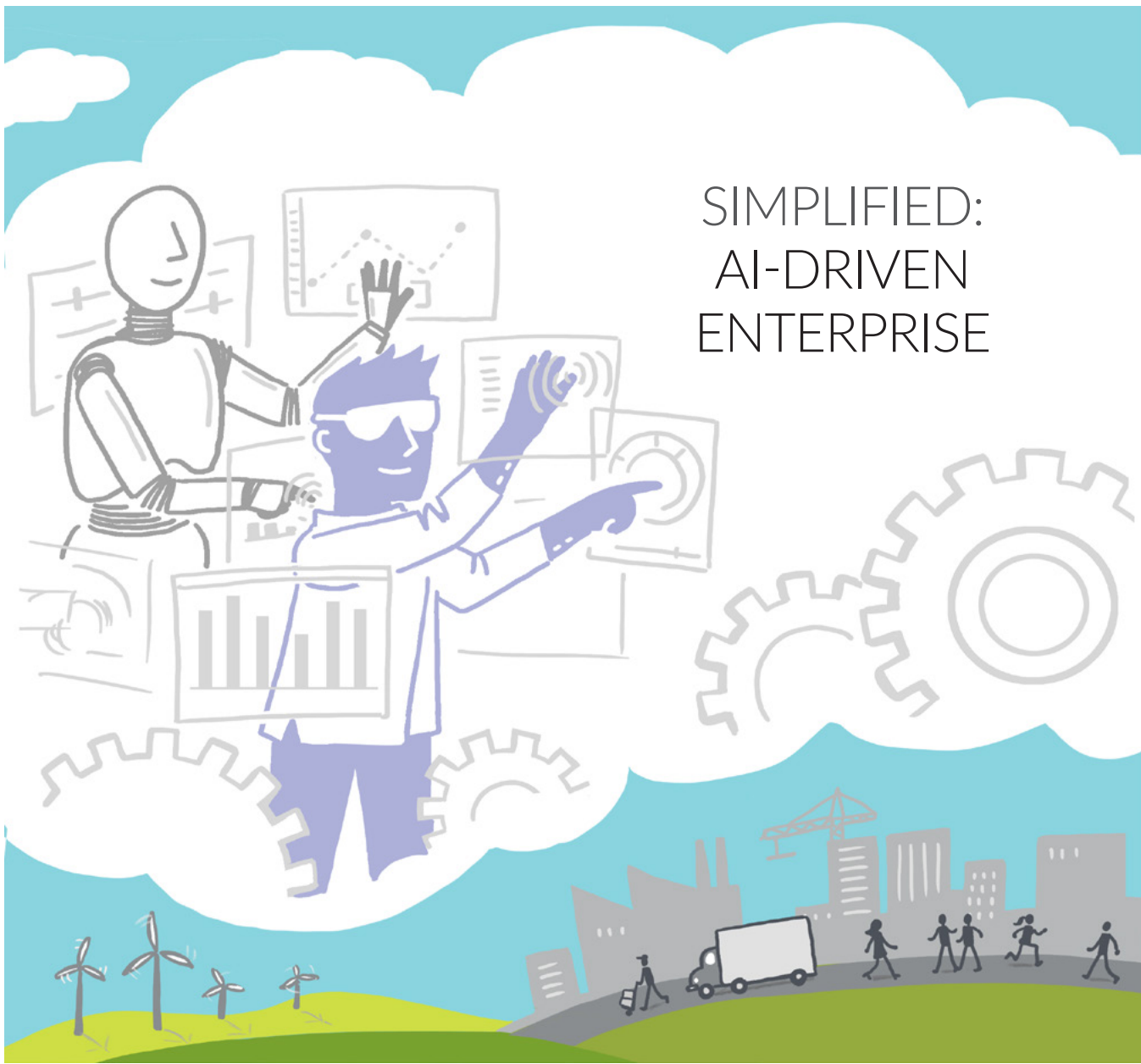


# SIMPLIFIED: AI-DRIVEN ENTERPRISE

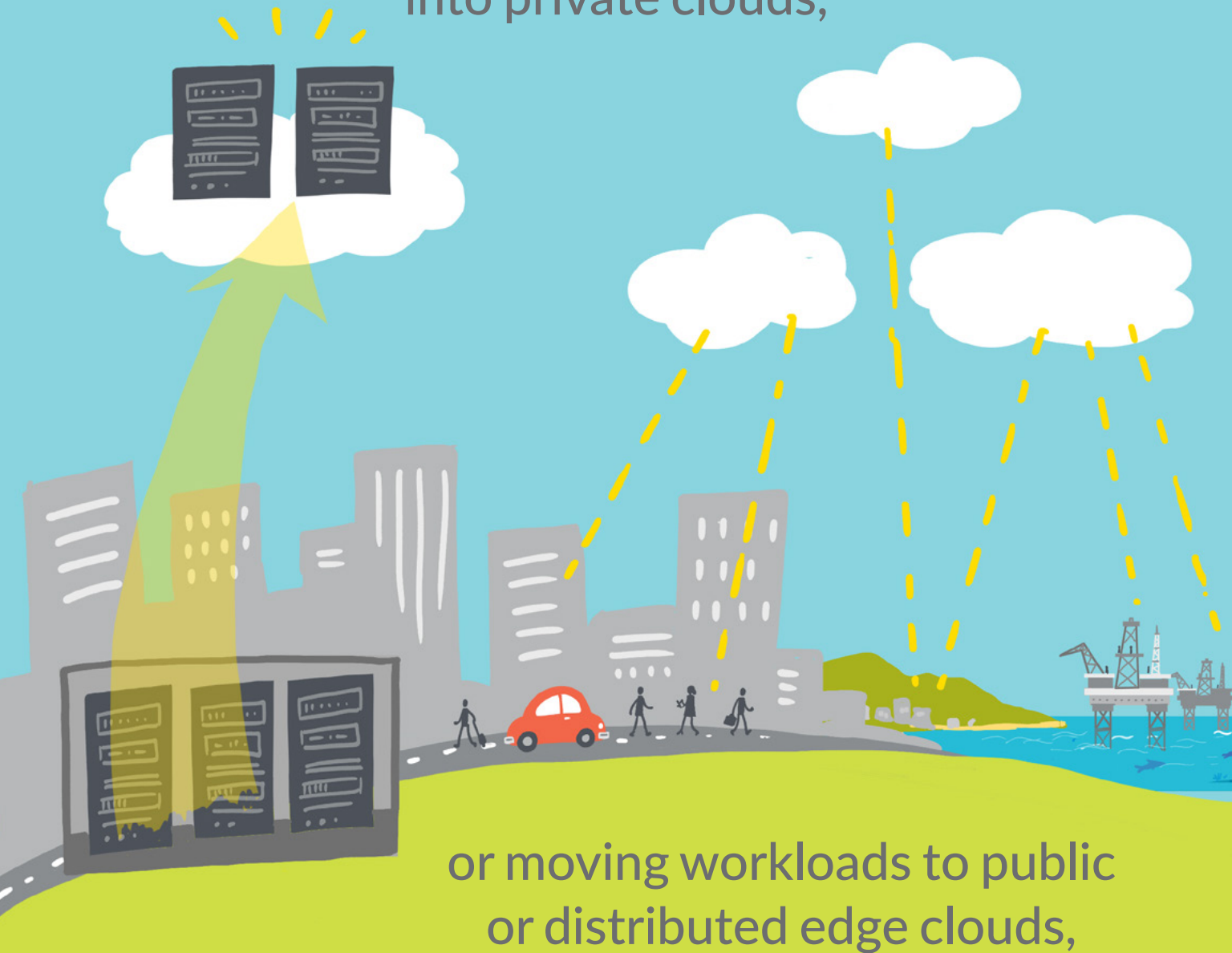


The evolution of enterprise IT  
has been defined by the cloud.





Whether evolving data centers  
into private clouds,




or moving workloads to public  
or distributed edge clouds,



every medium-size

The illustration shows a stylized city skyline on a dark grey horizon. A central yellow building with a grid of windows and a door is the focal point. Yellow dashed lines radiate from a large white cloud above it, connecting to various other buildings in the skyline. The sky is a light blue color.



or larger enterprise has  
cloud in their future.

The illustration shows a stylized globe with green continents and blue oceans. Small grey icons of buildings and a wind turbine are scattered across the globe. Yellow dashed lines radiate from a large white cloud above the globe, connecting to various locations on the planet. The sky is a light blue color.

What's driving enterprises  
to cloud and multicloud?



Some believe cloud  
is about using  
someone else's servers,  
so they can reduce costs.



The real value of cloud is in the  
operations, not the devices.

Cloud is not just about being cheaper,  
it's about being faster.

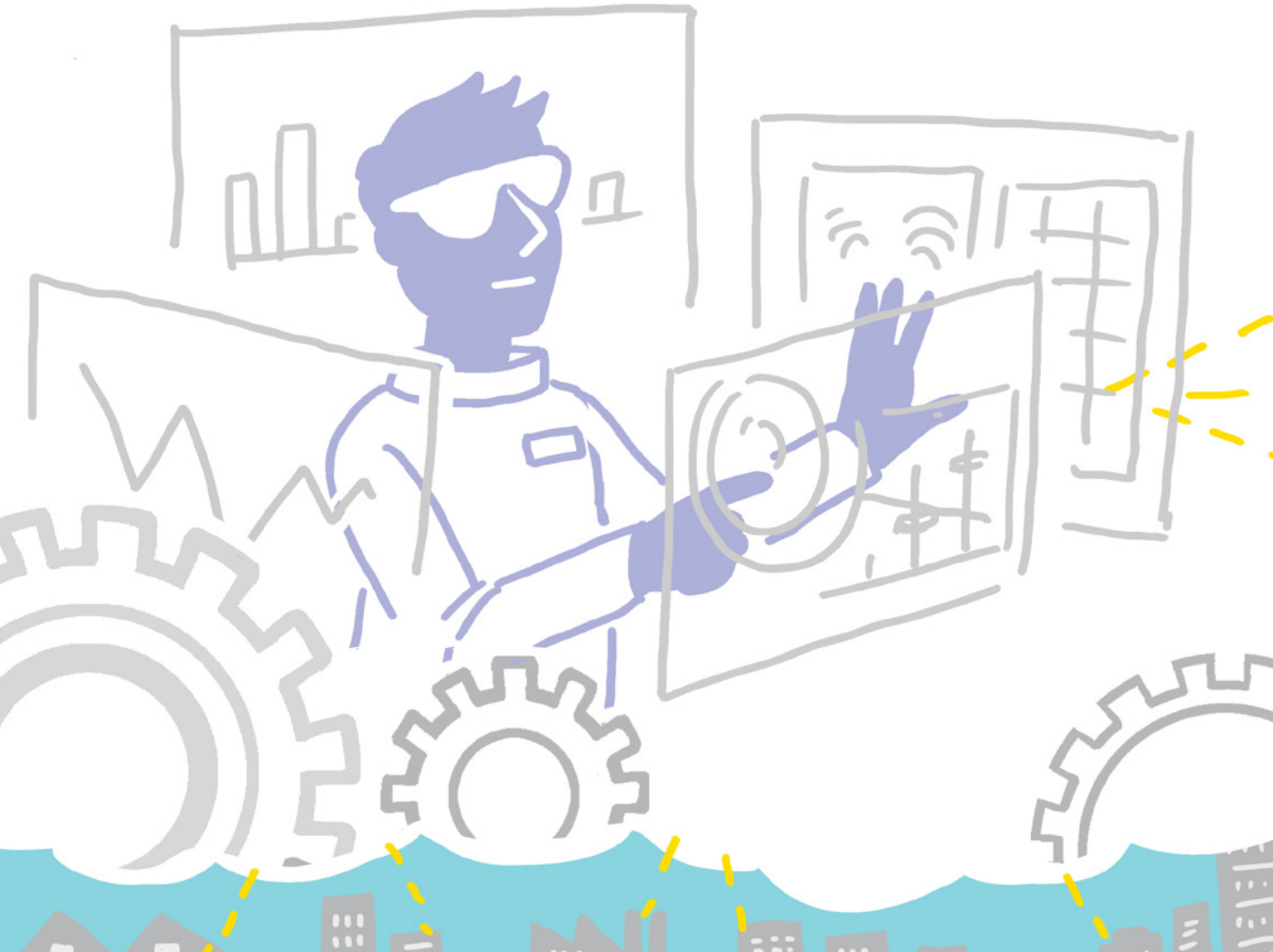




What's so different about  
cloud operations?



Cloud operations are software-defined.



IT professionals use controllers  
to manage vast pools  
of devices...



...and those pools can be diverse,  
with more than one vendor.



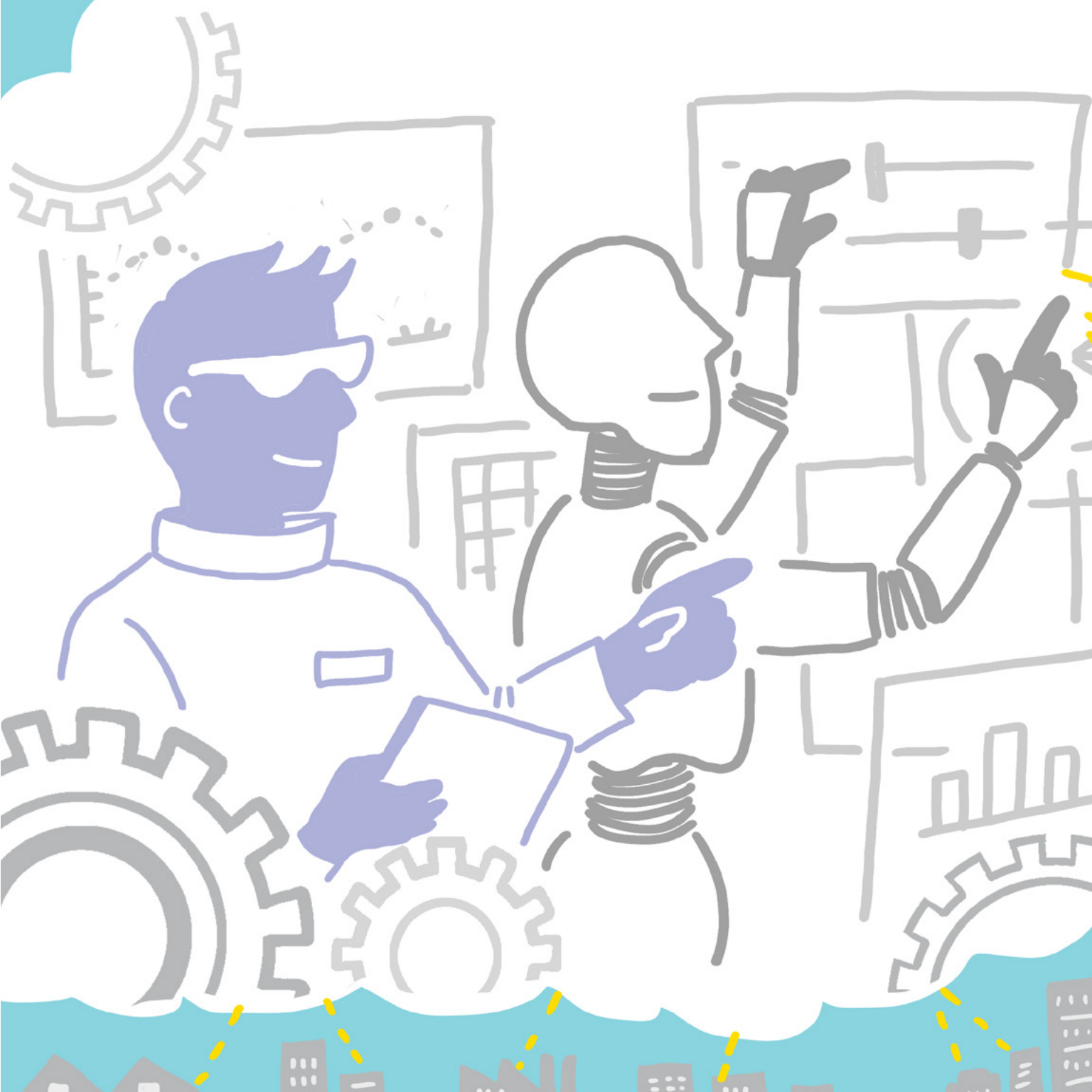


In the cloud, operations are not defined  
command-by-command  
but by automated workflows.



Multicloud means that those clouds are operated as a single, coordinated entity.







Cloud operations are largely programmable, so for enterprise it's not about administrators interacting with infrastructure.





It's about leveraging tools, interfaces, and data to reduce reliance on manual acts, as the future of operations become more AI-driven.



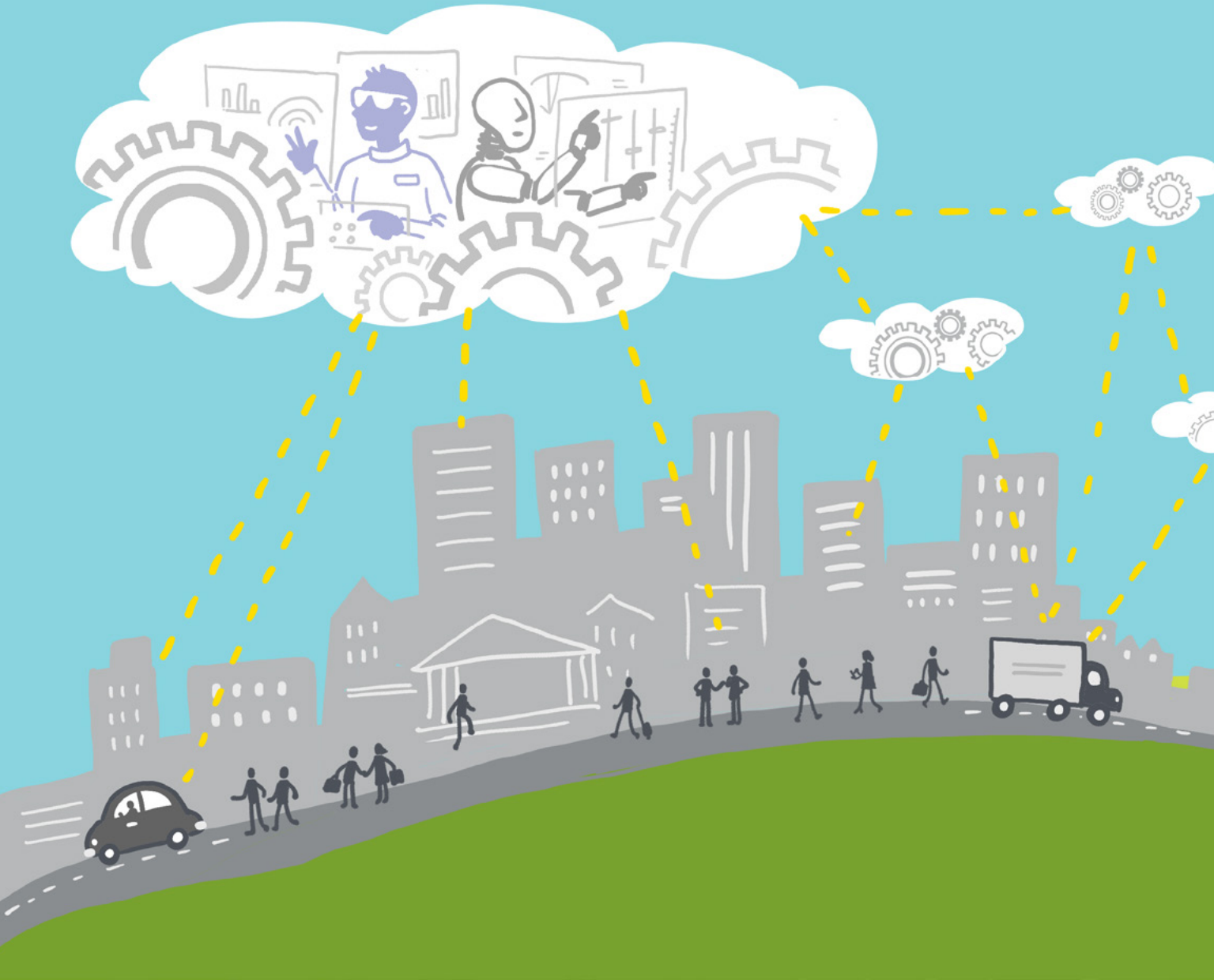
These AI-driven changes define today's data centers and public clouds.



But what about the rest  
of the enterprise?



The campus, branch, and WAN networks  
must also evolve...





...to become more AI-driven.





With abstracted control over diverse networks managed via automated workflows...

...extending end-to-end from campus to branch to WAN, from wired to wireless, leveraging AI to move from reactive to predictive.



And just as with any  
network evolution...





...the AI-driven enterprise  
will itself be a journey.

# SIMPLIFIED: AI-DRIVEN ENTERPRISE



2019 by Juniper Networks, Inc.

All rights reserved. Juniper Networks and Junos are registered trademarks of Juniper Networks, Inc. in the United States and other countries. The Juniper Networks Logo and the Junos logo, are trademarks of Juniper Networks, Inc. All other trademarks, service marks, registered trademarks, or registered service marks are the property of their respective owners.

Juniper Networks reserves the right to change, modify, transfer, or otherwise revise this publication without notice.

Concept by Tarek Radwan. Illustrated by Debora Aoki.

Published by Juniper Networks Books April 2019 2 3 4 5 6 7 8 9 10



**JUNIPER**  
NETWORKS | **Engineering  
Simplicity**